



SHOOT TO FAME

Presenting *Page 3* homes for you  *Imperia*
THE ART OF FINE LIVING



Get ready for celebrityhood.

Gala Imperia is a lavish residential project with four imposing towers, each of twelve storeys. Keeping the privacy aspect in mind, only two apartments per floor have been planned. Moreover, every apartment in Gala Imperia is open from all sides, which will result in abundant light and ventilation.

There are three exciting option of 4bhk apartments: 3060 sq ft, 3125 sq ft, 3860 sq ft and king size penthouses : 4035 sq ft, 4395 sq ft and 5315 sq ft.

A total of sixty six families will enjoy the limelight in this prestigious complex.

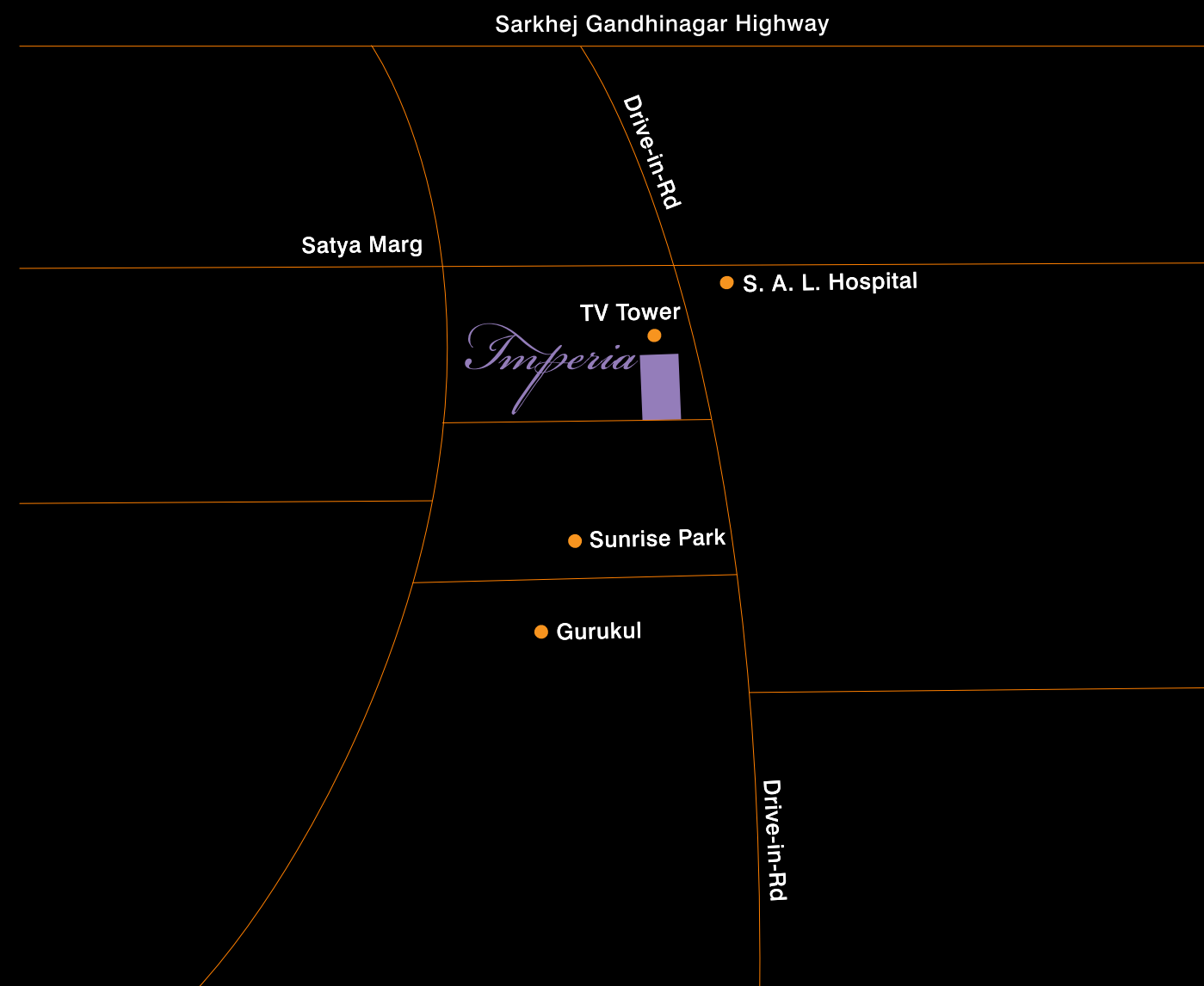


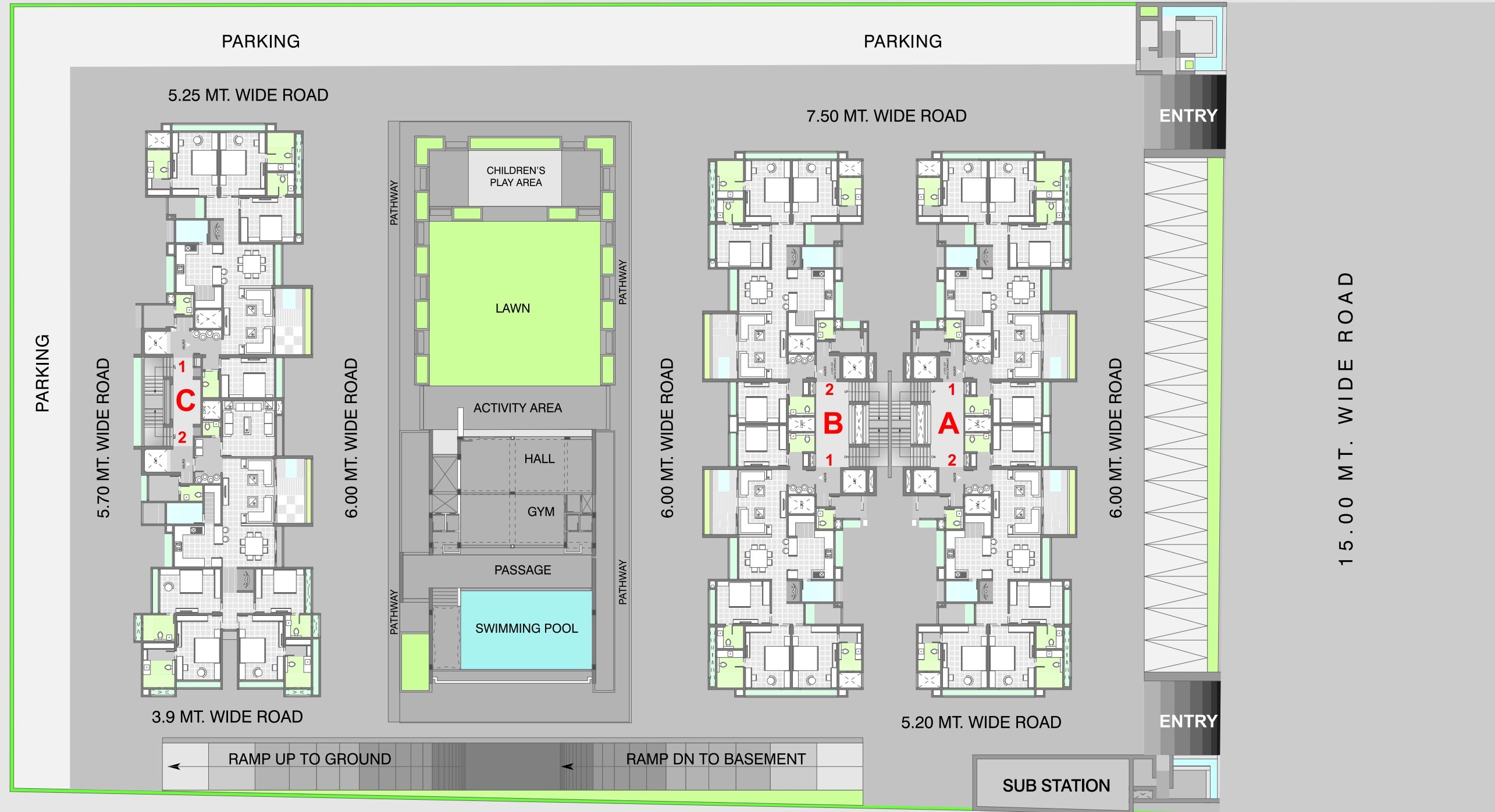
A celebrated location.

Just mention TV Tower and you need nothing more to talk about the location.

That's exactly why it has been chosen for a project of such stature.

This way, one distinguished entity will complement another.



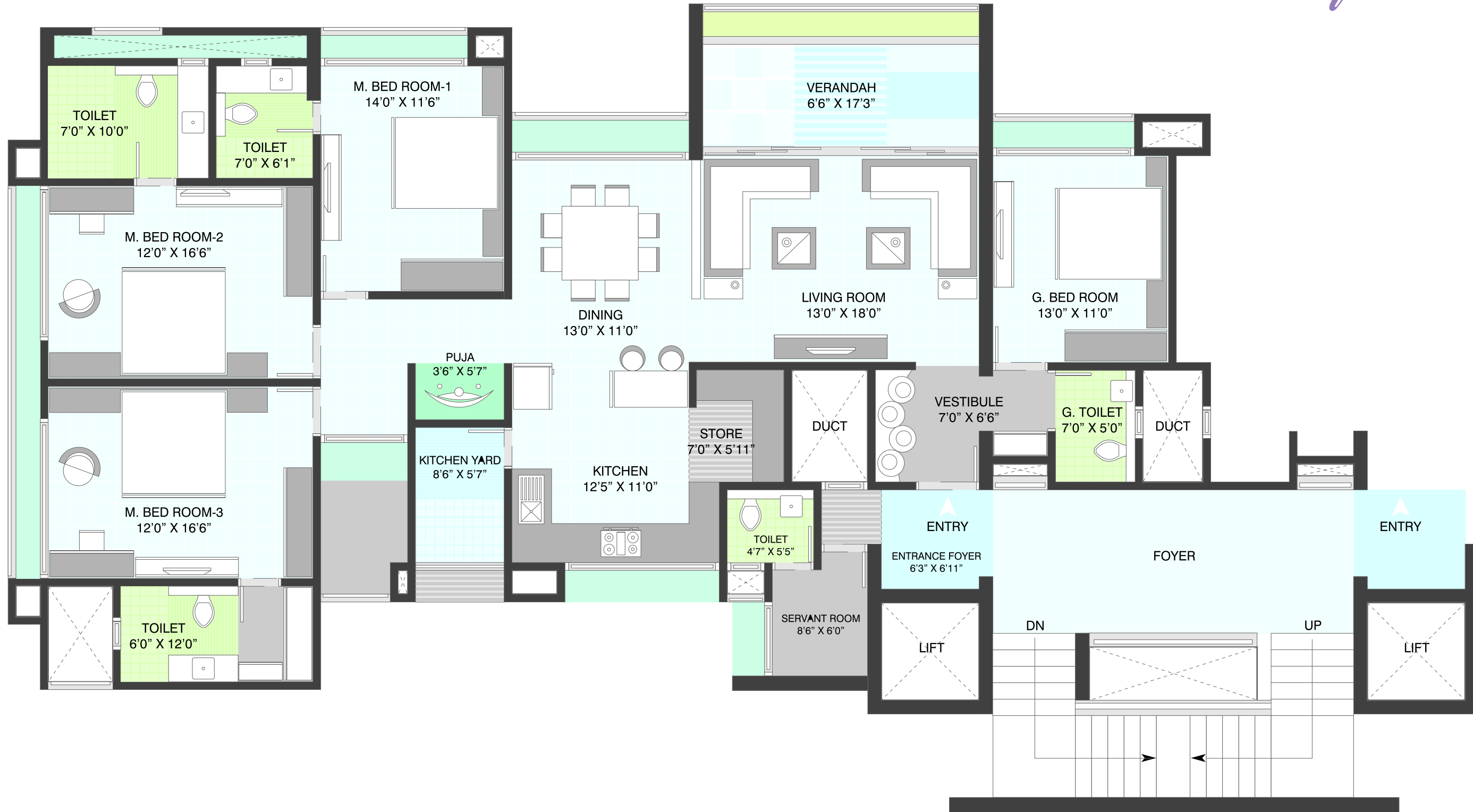


SITE PLAN

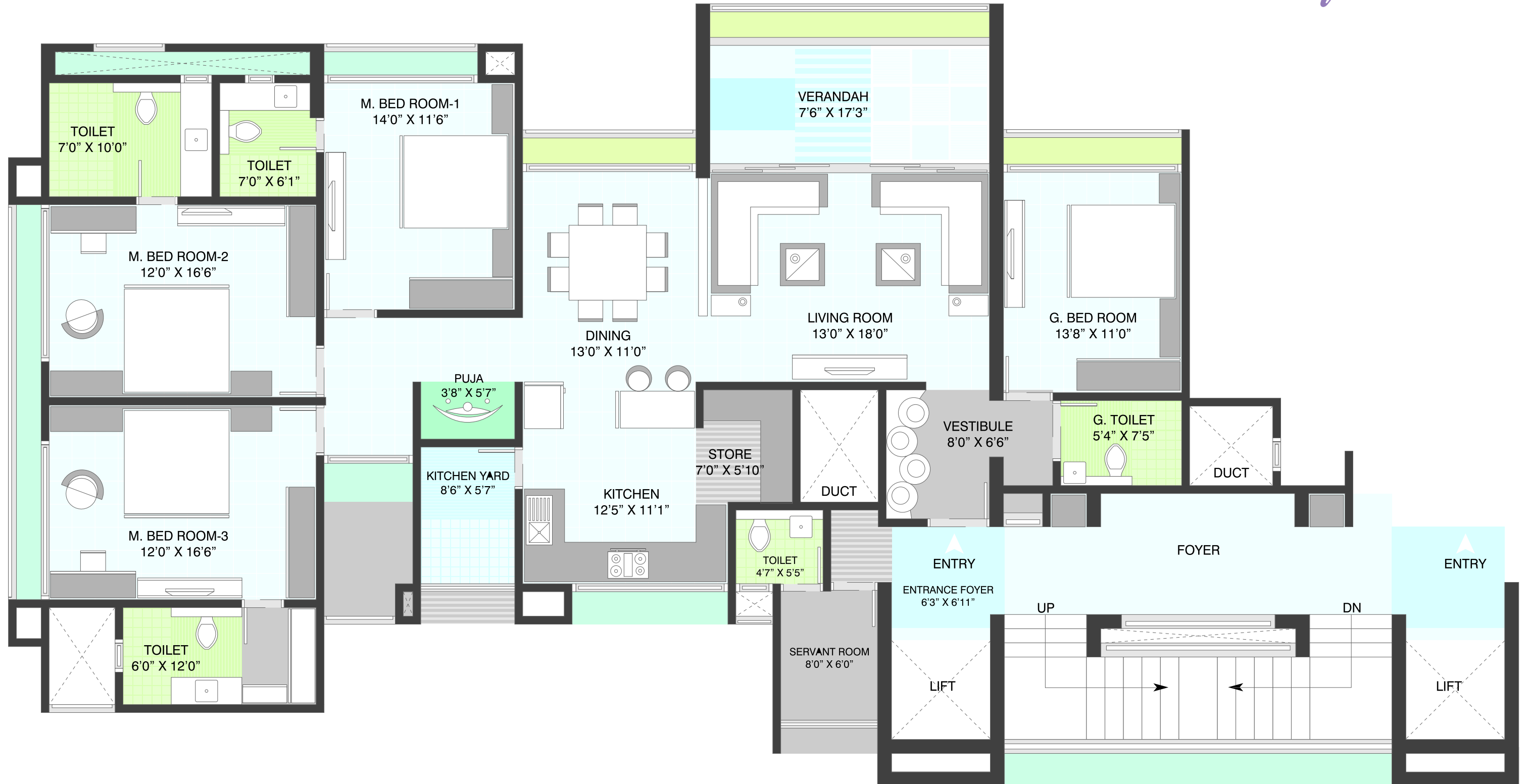




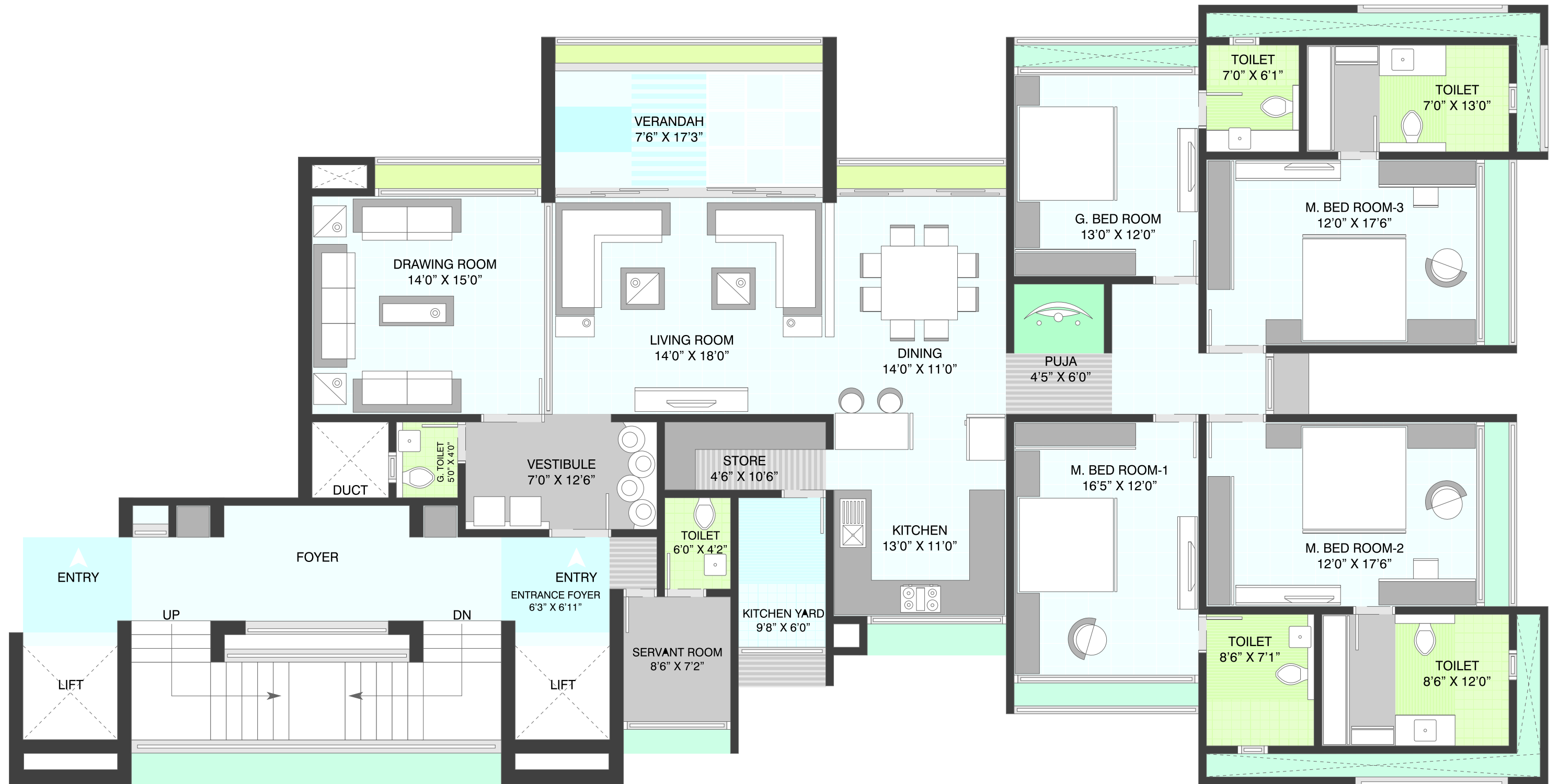
Imperia
THE ART OF FINE LIVING



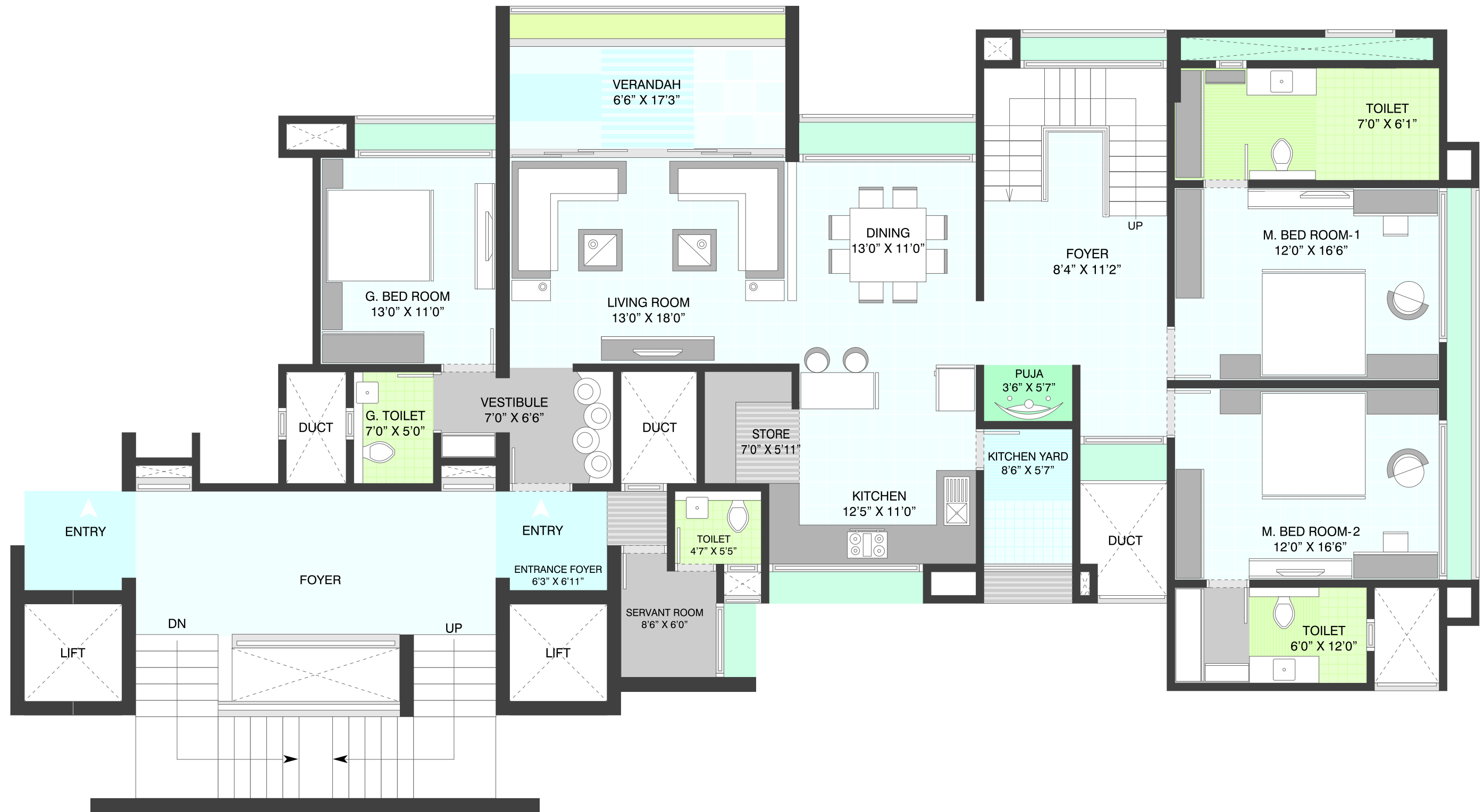
**4 BHK - TYPICAL FLOOR PLAN
BLOCK - A & B (3060 Sq.ft.)**



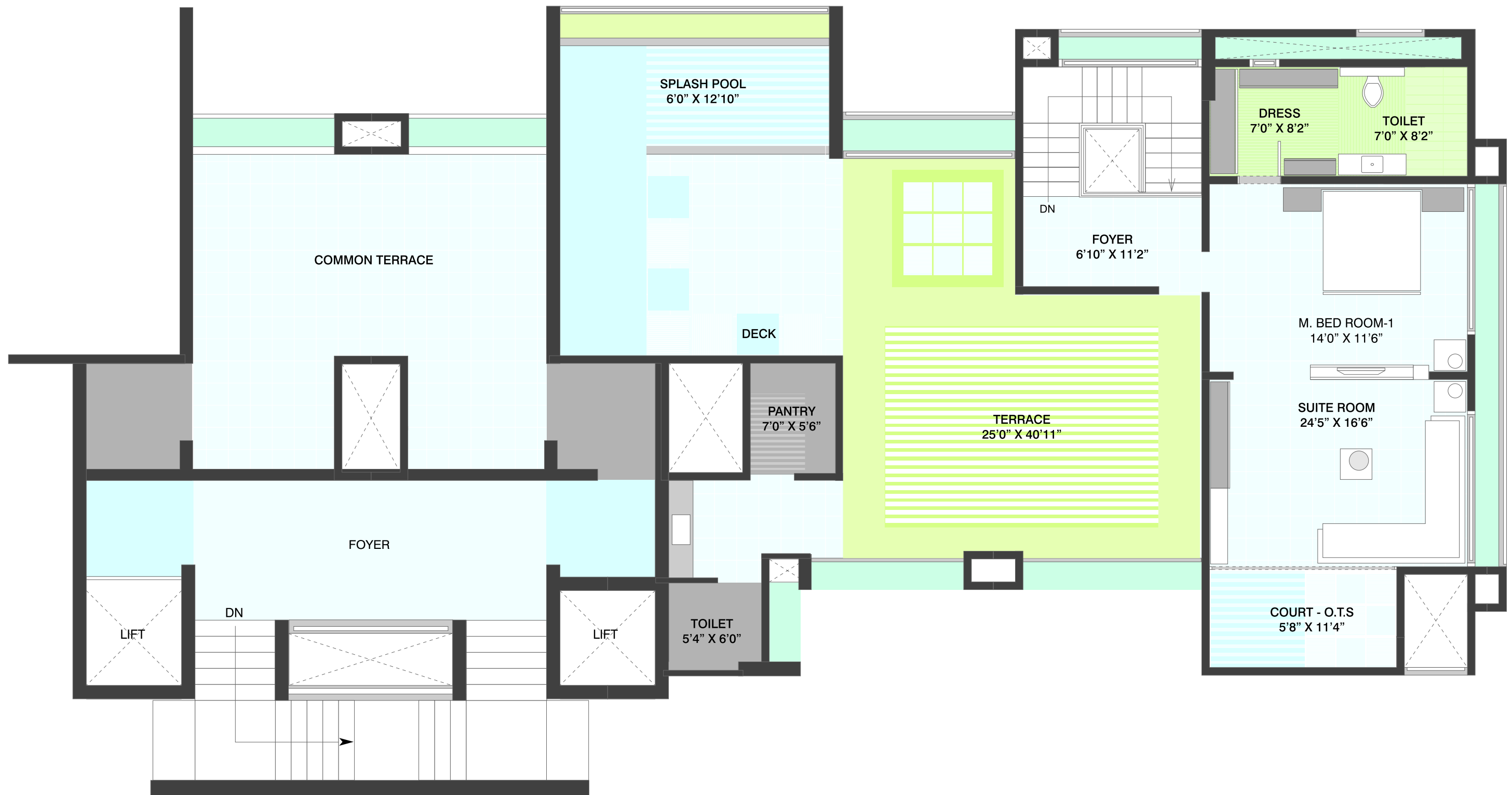
**4 BHK - TYPICAL FLOOR PLAN
BLOCK - C1 (3125 Sq.ft.)**



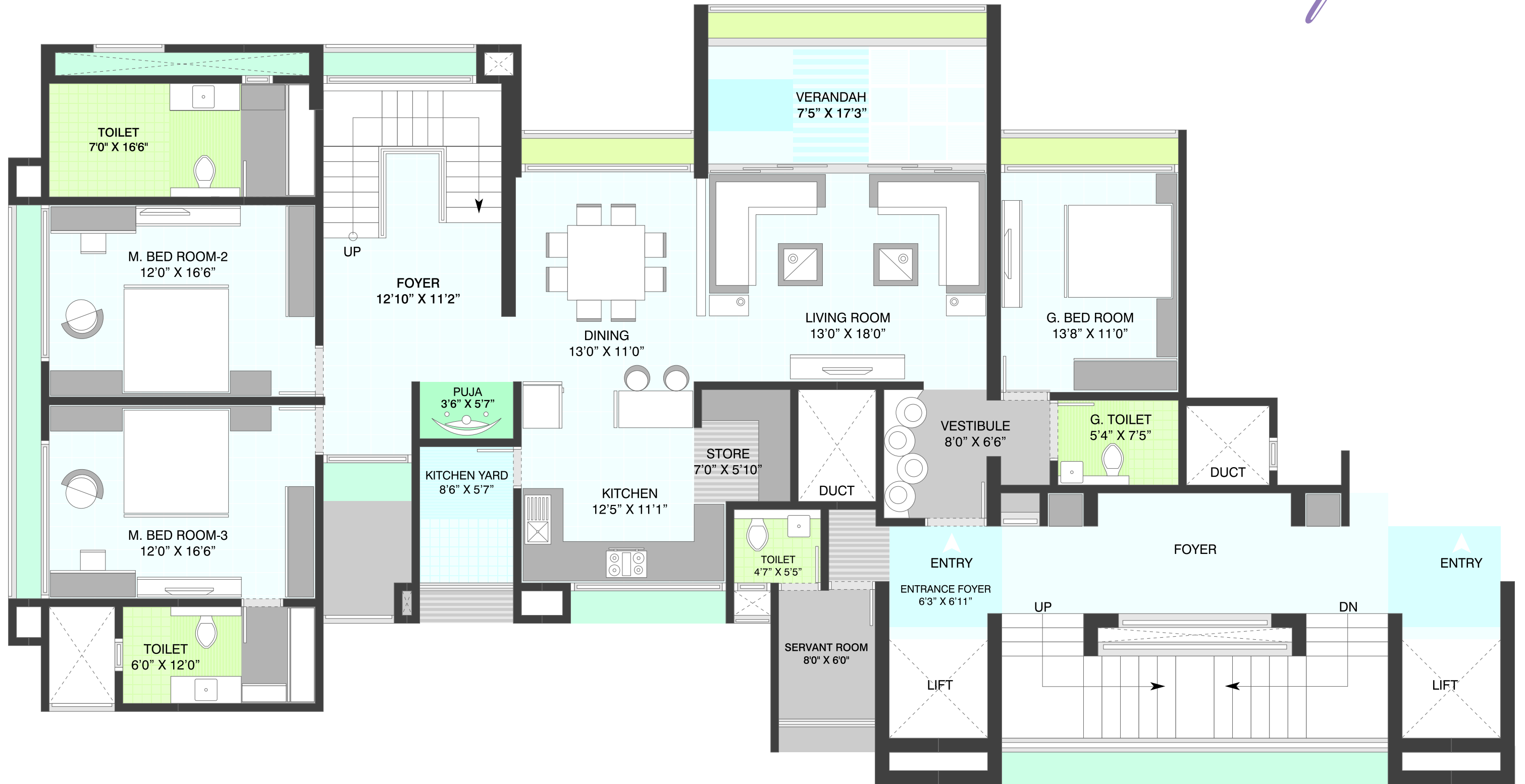
**4 BHK - TYPICAL FLOOR PLAN
BLOCK - C2 (3860 Sq.ft.)**



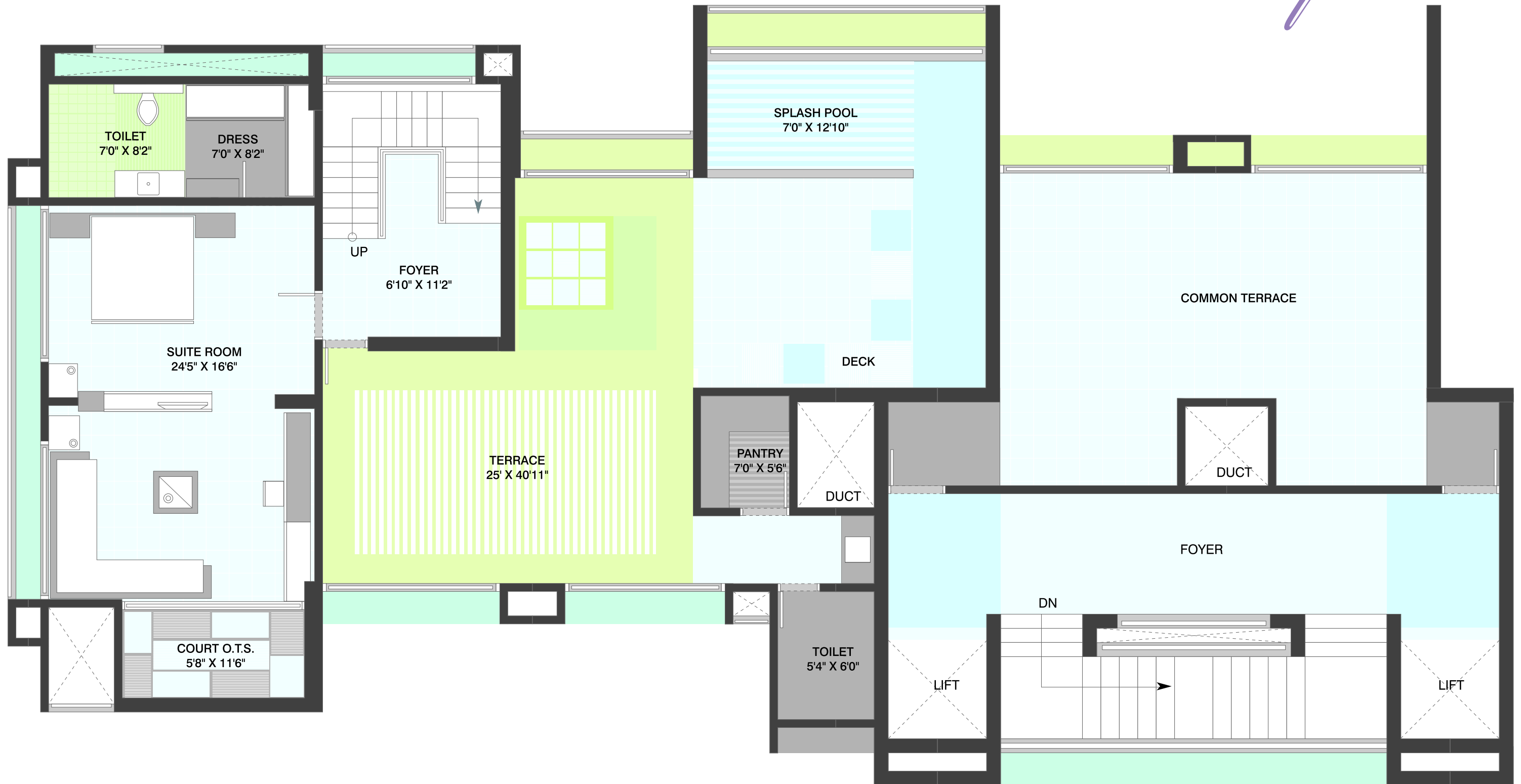
**BLOCK - A & B (4305 Sq. Ft. - SUBA)
4 BHK - PENT HOUSE - LOWER LEVEL**



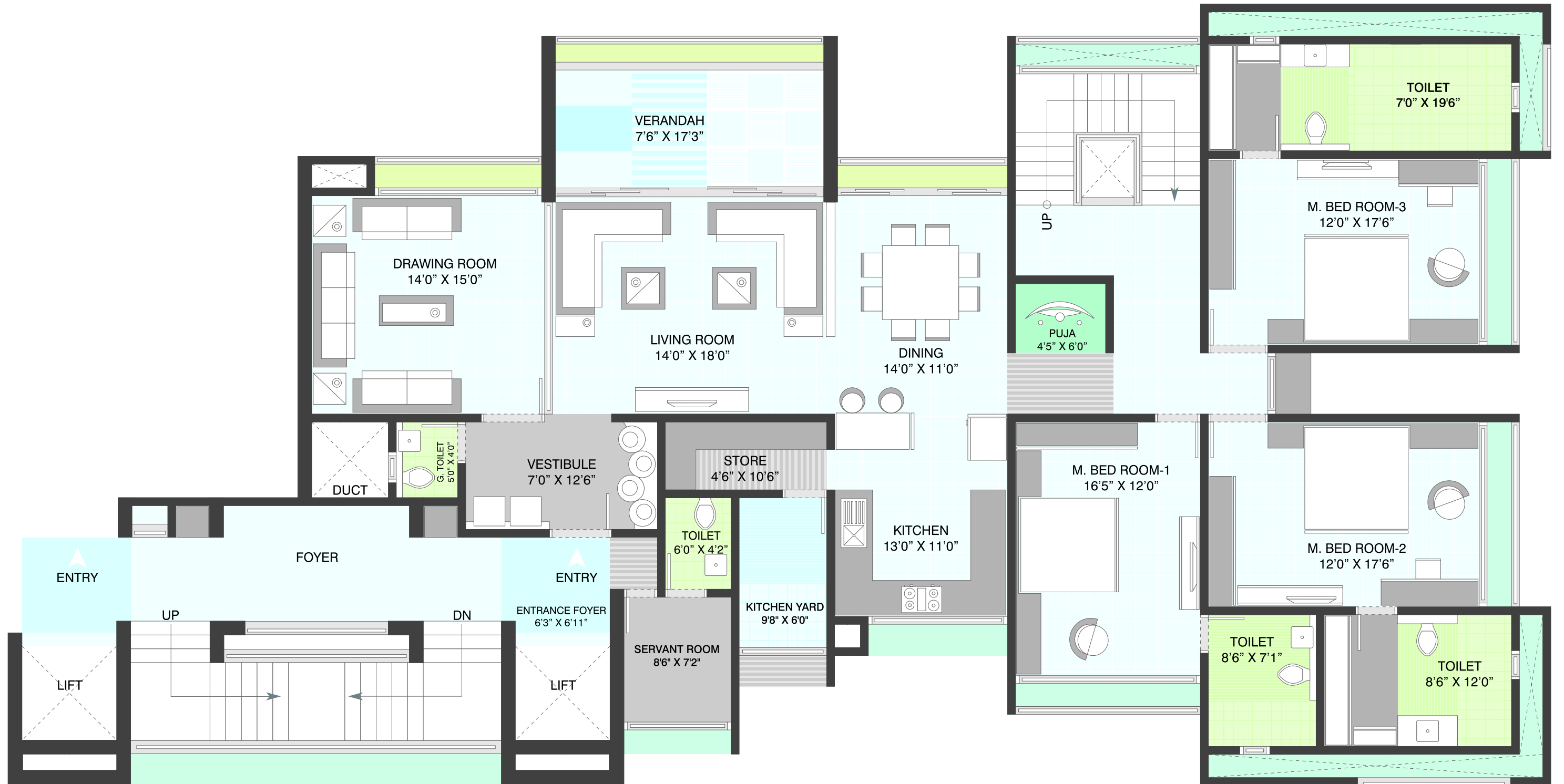
**BLOCK - A & B (4305 Sq. Ft. SUBA)
4 BHK - PENT HOUSE - UPPER LEVEL
OPEN TERRACE - 840 Sq.ft.**



**BLOCK - C1 (4395 Sq. Ft. SUBA)
4 BHK - PENT HOUSE - LOWER LEVEL**



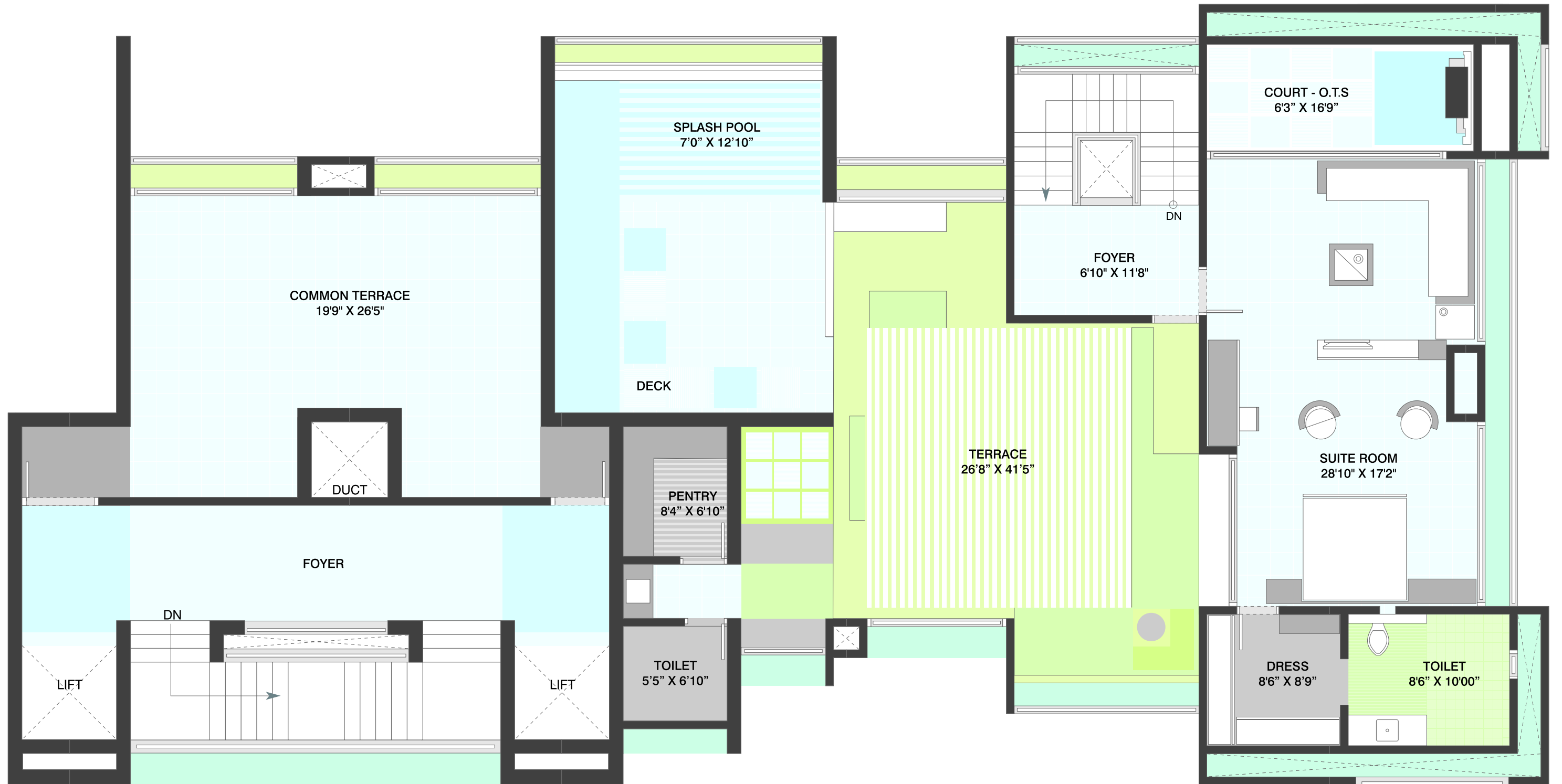
**BLOCK - C1 (4395 Sq. Ft. SUBA)
4 BHK - PENT HOUSE - UPPER LEVEL
OPEN TERRACE - 850 Sq. Ft.**



**BLOCK - C2 (5315 Sq. Ft. SUBA)
4 BHK - PENT HOUSE - LOWER LEVEL**



Imperia
THE ART OF FINE LIVING



**BLOCK - C2 (5315 Sq. Ft. SUBA)
4 BHK - PENT HOUSE - UPPER LEVEL
OPEN TERRACE 1120 Sq. Ft.**

SPECIFICATIONS

NO.	PARTICULARS	4 BHK
1.	Drawing Room	Wooden Flooring
2.	Living and Dining	Composite Marble Flooring
3.	Master Bedroom	Wooden Flooring
4.	Other Bedrooms	Vitrified Flooring (800 x 800)
5.	Kitchen	Composite Marble Flooring Polished quartz marble platform with rustic quartz sink with drain board DP Kota shelf in store room Kota stone flooring in wash area
6.	Doors & Windows	Decorative shutters with Wooden framing & flush doors in toilets Anodized aluminum sliding windows with marble revil
7.	Bathrooms &Toilets	Master Bedroom Toilet - Stone Flooring Other Toilets - Anti skid vitrified flooring & dado C.P. Fittings - Grohe or equivalent Sanitaryware - Kohler or equivalent
8.	Electrification	Three Phase concealed conduit with Copper Wires Decorative Modular Switches Sufficient points for power and lighting Protective M.C.B for all sockets (Legrand Make)
9.	Paints	Internal - Putty Finish, Extrenal - Sand-faced Plaster with Apex/Textured Paint
10.	Security Systems	Video Door Phone and Intercom facility
11.	Air Conditioning	In Drawing, Living, Dining, and All Bedrooms

Note : Developers reserves the rights to make necessary changes in the above specifications without any prior notice. Such changes would be binding on all the members.



Imperia

THE ART OF FINE LIVING

Gala Group, 9th Floor, Safal Profitaire, Corporate Road, Opp Auda Garden, Prahalad Nagar, Ahmedabad - 380015

Site Address: Gala Imperia, Beside Doordarshan Tower, Drive-in Road, Thaltej, Ahmedabad - 380052
Phone: +91 79 30710000 | 8141670000 | 8141680000 | Email: perfection@galainfra.com | www.galainfra.com