

Developer



501 & 502 Safal Prelude, Nr. Prahladnagar Garden,
Ahmedabad. Ph : +91-79-6512 2800.
Email : sambhavcom1@gmail.com

Structural Engineer

Achal Parikh

Legal Advisor

Chetan Shah & Associates

Architect



Shelter Called Life



Stavan Parishray – A Shelter Called Life.....**Feel The Beat**



Stavan Arise



Stavan Alteza



Stavan Anitra

Current Projects



Stavan Ample



Stavan Avisha

Sambhav Infrastructure Is Founded On A Vision Seeks To User In Better Tomorrow By Providing Improved Quality Of Life And Living Standard By Recognizing The Basic Needs Of City's Resident And The Real Estate Industry.



My Bless



My Love



My Family

My World

Your World Is A Pleasant Blender Of Your Family , Friends & Emotions That Makes You Feel Your Life. Let's Refine This Blender And Give It A New Shelter Of Life That Is Stavan Parishray.

Stavan Parishray A Shelter Called Life Which Will Refine & Regenerate Your World To Make It More Rejoicing & Refreshing.

Here At Stavan Parishray , A Home Is Created To Give Every Bit Of Life To Your World, So That You Can See Your Child Sleeping In Your Lap With A Little Smile On His Face, A Satisfaction Of Getting A Perfect Home On Your Life Partner's Face. A Home Where You Will Come To Know The Real Sense Of Blessing Of Your Parents.

Come Step Into Your Perfect World And Be A Part Of Our World At Stavan Parishray. A Shelter Called Life Awaits You.

Space As Wide As Mind, As Open As
Thinking And As Beautiful As Thought Blending
Happiness With Luxury.



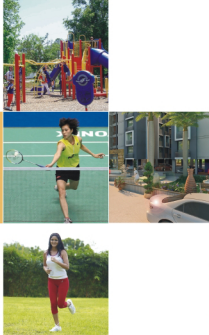
Stavan Parshray, A Space To Build Your Dream Life Which
Is Loaded With All Means Of Happiness. At Stavan
Parshray , Every Step That You Take Will Disclose A New
Meaning Of Cheerful Life.



Stavan Parishray Is A Dream, Etched With Love For You To Live It.



Amenities



Stavan Parishray A Perfect Blend Of Leisure And Luxury, Peace And Comfort With Affordability Having A Pure Intention Of Nurturing Your Life With Best Of Amenities.



More Than 60% Open Area | Round The Clock Gated Security | Fully Automatic Elevators | Basement Plus Ground Level Parking Facility | Indoor Games And Gymnasium (Club House) | Children's Play Area | Jogging Track | Volleyball Court Or Badminton Court | Pick-up And Drop-off Zone For Children | Senior Citizen Seat-out | Water Body And Fountain | Landscaped Garden





ROAD



Ground Floor Plan

1. Entry
2. Drop Off Zone
3. Children Play Area
4. Badminton & Volley Ball Court
5. Club House
6. Garden
7. Ramp In
8. Ramp Out
9. Exit
10. Senior Citizen Sit Out
11. Water Body
12. Jogging Track

Block A, B, C & D : Low Rise 2BHK
 Block E, F, O & P : High Rise 2BHK
 Block G, H, I, J, K, L, M & N : Low Rise 1BHK



ROAD

ROAD



Block A, B, C & D : Low Rise 2BHK
 Block E, F, O & P : High Rise 2BHK
 Block G, H, I, J, K, L, M & N : Low Rise 1BHK

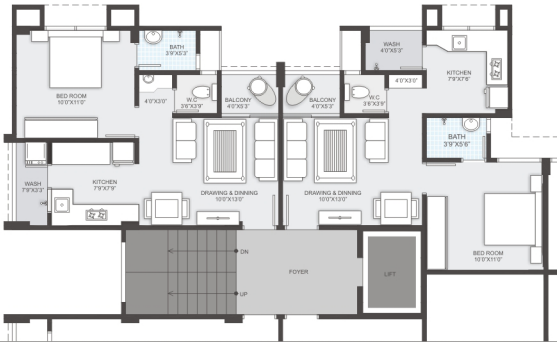
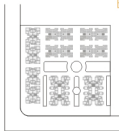


ROAD

1 BHK Typical Unit



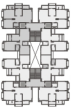
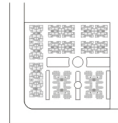
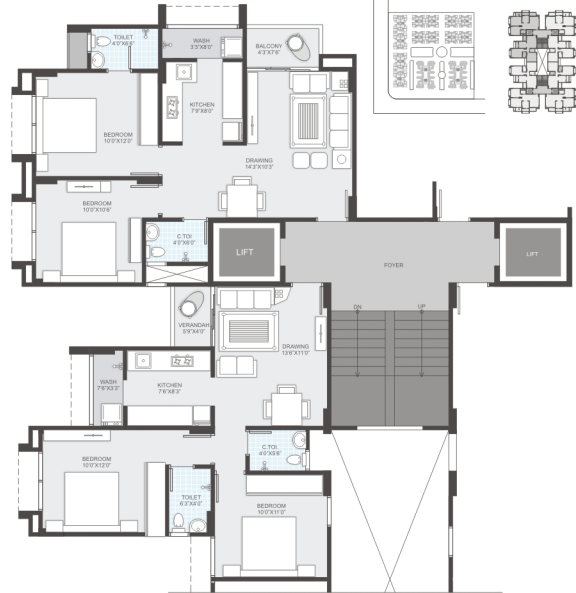
Block: (G, H, I, J, K, L, M & N) Low Rise



2 BHK Typical Unit

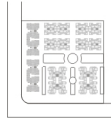


Block: (E, F, O & P) High Rise



2 BHK Typical Unit

Block: A, B, C, D, Low Rise



Standard Terms and Conditions

- This Brochure Is For Information Only And Not Part Of Any Legal Document
- All Measurements Are Subject To Change As Required
- The Rights To Change Plan And Structure Reserves With Organizer
- No External Changes Will Be Allowed Or Entertained
- All Legal Charges, AEC Charges, Service Tax And AMC Charges Will Be Borne By Occupier Or Members
- Any Extra Charge In Between Due To Change In Government Policy Or Rates Will Be Informed And To Be Borne By Member
- Maintenance Deposit Shall Be Borne By Members
- Any Commercial Activity Leading To Any Kind Of Pollution Or Disturbance To Residents Will Not Be Allowed
- Terrace And Margin Rights Lies With Organizer
- Irregular Payment Will Lead To Cancellation Of Booking
- Any Change Directed By Architect/ Organizer Will Be Binding To All Members



Specification

1. Flooring 2' X 2' Vitrified Tiles In All Room , Granite Platform With Branded Sink & 4ft Height Ceramics Tiles Dedo, Kota Stone Floor In Wash Area- Balcony : Vitrified Tiles.
2. Doors Flush Doors [32 mm] 5.5 Matt Finish Handle Locks - Main Door : Polished Natural Veneer With Night Latch - Bedroom Doors : One Side Polished Natural Veneer.
3. Windows Anodized Aluminum Sliding Windows With Marble Revil.
4. Toilet Glazed/ Ceramic Tiles Upto Lintel Level - Granite / Marble Counter - EWC Closet- Wall Mount - CP Brass Fitting - Jaquar.
5. Electrification 3 Phase Concealed ISI Copper Wiring With Modular Switches - MCB Distribution Panel.
6. Colour Internal : Putty Finish Exterior 100% Acrylic Paint.

Key Plan



Stavan Parishray Is Located In The Fast Development Zone Of New Face Of Ahmedabad. With Rapidly Developing City And Infrastructure Growth Happening In Your Surrounding. You Will Find Yourself In The Midst Of Development Island. Well Connected With All Major Parts Of Cities And Other Civic Amenities. It's A Place Which Going To Be Most Desired Location.